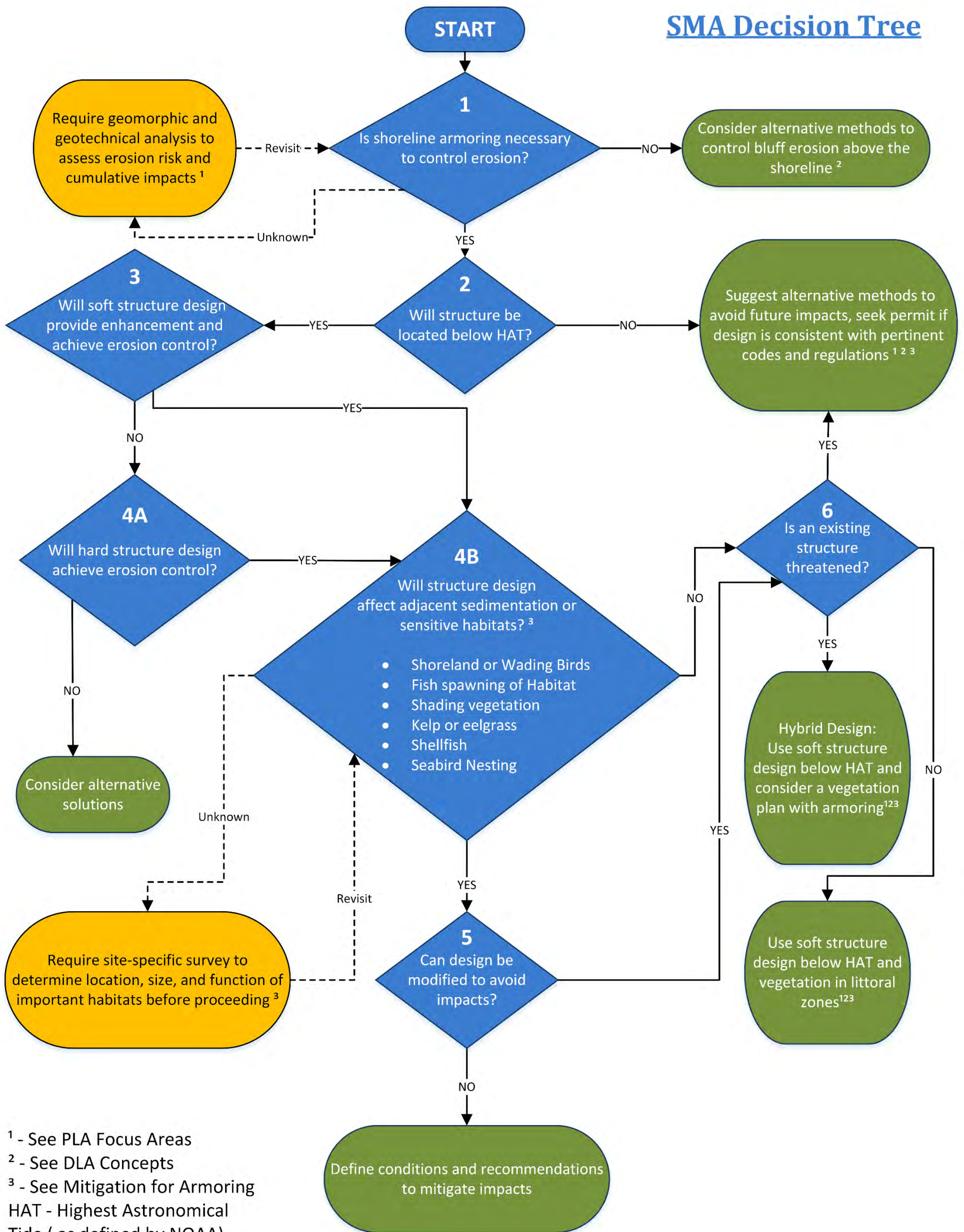


APPENDIX D: ASSESSMENT TOOLS

- Figure 1. Decision Tree
- Figure 2. RLA Assessment Sheet



SMA Decision Tree

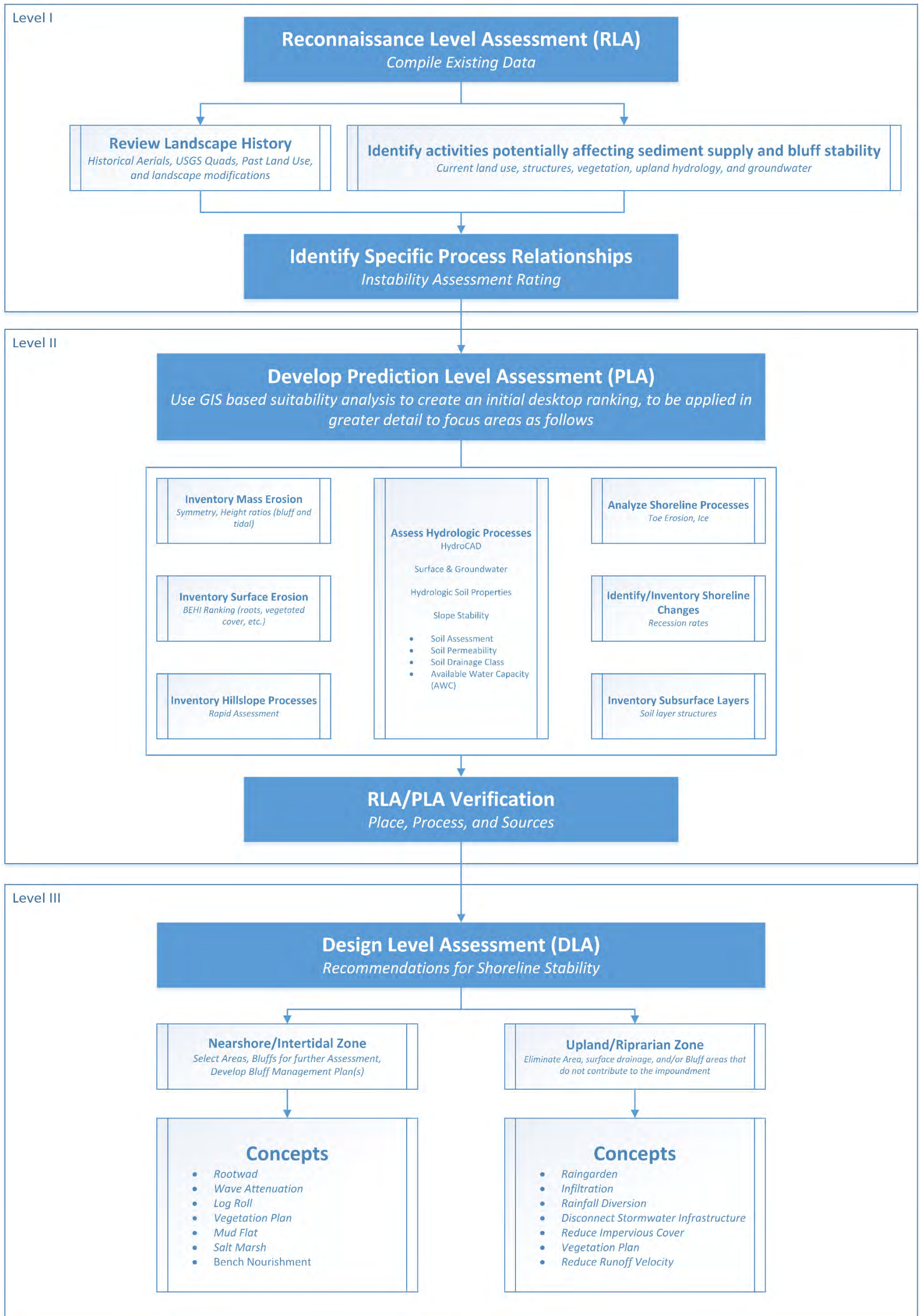


¹ - See PLA Focus Areas
² - See DLA Concepts
³ - See Mitigation for Armoring
 HAT - Highest Astronomical
 Tide (as defined by NOAA)

The Shoreline Management Assessment Decision Tree was developed for the Maine Coastal Program/Maine Department of Agriculture, Conservation and Forestry by the Cumberland County Soil and Water Conservation District. This work was supported by the National Oceanic and Atmospheric Administration (NOAA) Coastal Zone Management Cooperative Agreement #NA14NOS4190047 pursuant to the Coastal Zone Management Act of 1972



Bluffs Task 1



The Shoreline Management Assessment Decision Tree was developed for the Maine Coastal Program/Maine Department of Agriculture, Conservation and Forestry by the Cumberland County Soil and Water Conservation District. This work was supported by the National Oceanic and Atmospheric Administration (NOAA) Coastal Zone Management Cooperative Agreement #NA14NOS4190047 pursuant to the Coastal Zone Management Act of 1972 as amended.